



Arkansas Soybean Association

1501 N. Pierce, Suite 100
Little Rock AR 72207
501-666-1418 office
501-666-2510 fax

PRESORTED
FIRST CLASS
U.S. POSTAGE
PAID
PERMIT #588
LITTLE ROCK, AR

Address Service Requested



Grow for the Green Soybean Yield Challenge

The Grow for the Green Soybean Yield Challenge and the 100 Bushel Club contests are funded by the Arkansas Soybean Promotion Board using checkoff funds. The contests are administered by the Arkansas Soybean Association in cooperation with the University of Arkansas System Division of Agriculture.

Entry Deadline: August 1, 2022

No exceptions - entry form may be mailed, emailed (swsoy@aristotle.net), or faxed (501-666-2510) to the office.



2022 Soybean Yield Contest Entry Form

Grow for the Green Soybean Yield Challenge

Purpose: To recognize and reward the top Soybean producers in Arkansas and to pass along production information from the best fields in Arkansas. Yields must equal or exceed 60 bushels/acre minimum.

Announcing the Champion of Champions Division. All previous 100 Bushel Club members are eligible for the Champions Division. They will compete for 1 prize of \$10,000. Champion is not eligible for any of the regional division prizes. All entered champions are required to report their harvest data and production practices regardless of yield (failure to do so will result in disqualification from all future yield contests). Results will not be released until Arkansas Soybean Association Annual Meeting.

Awards for each division (see division map): 1st place: \$7,500, 2nd place \$5,000, 3rd place \$2,500

All producers entered in the yield challenge are asked to submit harvest reports and complete production data. Any producers who submit the required harvest information and do not place in their division will be awarded \$100 for entering and have their names placed in a drawing for \$1,000.

The 2022 Grow for the Green Contest will be divided in 7 regional divisions and a conventional (non-gmo) division. Divisions are:

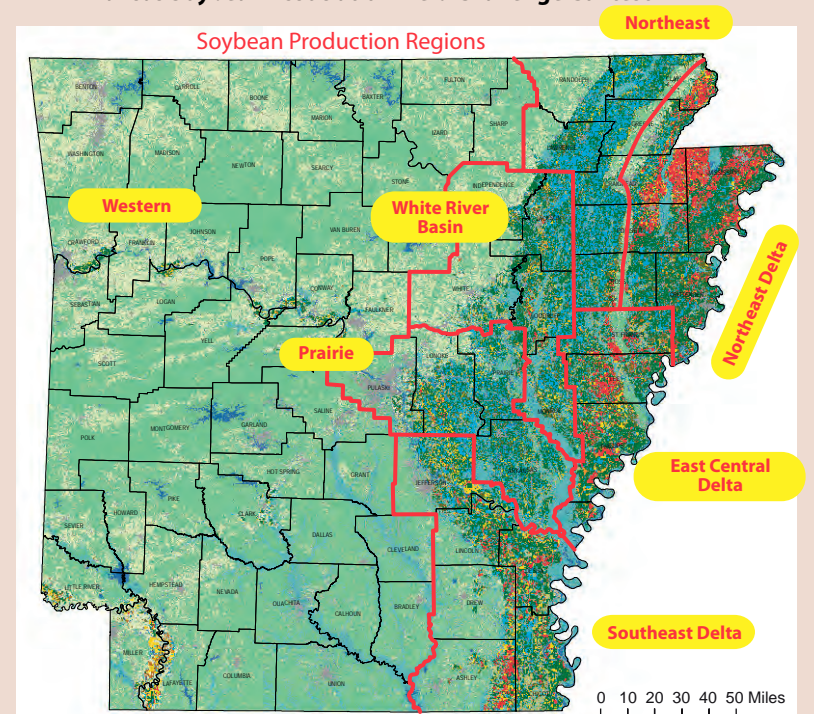
- 1. Northeast Delta:** Mississippi, Crittenden and East of Crowley's Ridge in Clay, Greene, Craighead, Poinsett, Cross counties
- 2. Northeast:** Randolph, Lawrence and West of Crowley's Ridge in Clay, Greene, Craighead, Poinsett, Cross counties
- 3. White River Basin:** Independence, Jackson, Woodruff, White, Monroe counties
- 4. Central & Grand Prairie:** Pulaski, Lonoke, Prairie, Arkansas counties
- 5. East Central Delta:** St. Francis, Lee, Phillips, Desha (Snow Lake Area) counties
- 6. Southeast Delta:** Jefferson, Lincoln, Drew, Ashley, Chicot, Desha counties
- 7. Western:** Remainder of the state
- 8. Conventional Division:** Entire state, production of non-GMO soybeans

New members of the 100 Bushel Club will eligible for a trip to Commodity Classic in March 2023 (travel for 2, 2 nights lodging, registration)

Arkansas 100 Bushel Club - any new producer who attains grain yields equaling or exceeding 100 bu/A will be inducted into the Arkansas 100 Bushel Club. These producers will be eligible to split an additional \$5,000 in prize money. Current members of the 100 Bushel Club not eligible for the \$5000. Other prizes (jacket or watch) may also be awarded.

Arkansas Soybean Association Yield Challenge Contest

Soybean Production Regions



ENTER ME IN THE FOLLOWING CONTEST:

Contestant must have paid the appropriate checkoff assessments on soybeans during the previous 3 years

The contest will be broken down into geographical divisions and an overall conventional division.

PLEASE SELECT YOUR DIVISION (Please circle county)

- ____1. **Northeast Delta:** Mississippi, Crittenden and *East of Crowley's Ridge in Clay, Greene, Craighead, Poinsett, Cross counties*
- ____2. **Northeast:** Randolph, Lawrence and *West of Crowley's Ridge in Clay, Greene, Craighead, Poinsett, Cross counties*
- ____3. **White River Basin:** Independence, Jackson, Woodruff, White, Monroe
- ____4. **Central & Grand Prairie:** Pulaski, Lonoke, Prairie, Arkansas
- ____5. **East Central Delta:** St. Francis, Lee, Phillips, *Desha (Snow Lake Area)*
- ____6. **Southeast Delta:** Jefferson, Lincoln, Drew, Ashley, Chicot, Desha
- ____7. **Western:** Remainder of the state
- ____8. **Conventional Division:** Entire state, production of non-GMO soybeans

Name: _____

Farm Name: _____

Mailing Address: _____

City: State: Zip: _____

Home Phone: _____ Cell Phone: _____

Fax: _____ Email address: _____

Field Location (Include Field GPS Location): _____

Primary ACO (see rules): (Please include name, title, address, phone number: _____

Signature of Applicant _____ Date

Producers are encouraged to contact the office to confirm that their entry forms and harvest data have been received.

Data from contest fields with incomplete harvest reports and production sheets will not be reported and contestants are not eligible for any prize money or additional contest prizes.

Entry Deadline: August 1, 2022 - (No exceptions - entry form may be mailed, emailed, or faxed to office)

Submit this form to: Arkansas Soybean Association, 1501 N Pierce, Suite 100, Little Rock AR 72207

Questions? Contact the Arkansas Soybean Association at 501-666-1418 or swsoy@aristotle.net.

2022 Grow for the Green Yield Challenge

ELIGIBILITY:

- Each contestant must be at least 18 years of age on or before August 1, 2022 and **must also be actively engaged in soybean production.**
- All Contestants must complete ALL contest entry, yield and/or production & harvest information forms to be eligible for any of the cash awards. Data form will be provided following submission of entry form. **A soil test report will be required with all harvest reports this year.**
- Contestants are only eligible to receive one official contest cash prize per year.**
- Prize winners agree to allow Arkansas Soybean Promotion Board (ASPB), Arkansas Soybean Association (ARSA), and U of A System Division of Agriculture (UADA) to use field data and to appear in person in promotional and educational activities.
- Prizes will be presented at the Arkansas Soybean Association Annual meeting in January 2023. **Contest winners must be present at the Annual Meeting to receive their prize.**
- Current directors of the AR Soybean Promotion Board, AR Soybean Association, University of Arkansas Personnel and their immediate families are not eligible. (Immediate family is defined as: spouses, parents, grandparents, siblings, children and grandchildren)

FIELD CRITERIA:

- Contest field must be located within the land boundaries of the State of Arkansas.
 - Contest held must be owned or operated by the contestant and easily accessible by an Approved Contest Official (ACO). An ACO includes a University of Arkansas County Extension Agent or University of Arkansas Division of Agriculture (UADA) Agronomist and/or a current registered Arkansas Certified Crop Advisor (certified by the American Society of Agronomy and/or the AR State Plant Board).
 - Contest is limited to one producer or entity per division. One field/one person or entity/one division.
 - ACO's are not eligible to serve as judge if employed as consultant by the producer/contestant. It is recommended that Primary ACO be a member of the UADA. Immediate family of producer not eligible to serve as judge.
Secondary judges may be anyone associated with agriculture (crop insurance agents, vo ag teachers etc.) as long as they have no affiliation with the producer and the primary ACO is employed by the University of Arkansas.
 - Harvest area must consist of a minimum of five (5) contiguous acres and a maximum of seven (7) contiguous acres.
 - Harvest area must have four (4) straight sides and harvest area must have four (4) right angles forming a square or rectangle.
 - Field must have been planted to soybeans in at least one of the last 3 production years prior to 2022 and contestant must have paid the appropriate checkoff assessments on soybeans.
- ### YIELD CONTEST RULES:
- Harvest soybeans must meet minimum Federal Grain Quality Standards.
 - State certified scales** and moisture testers must be used for all measuring and weighing processes. Original weigh ticket (No photocopies) must be attached to the Harvest Report Form. **Weigh ticket must depict percent foreign matter (FM).**
 - ARSA & ASPB reserves the right to have a designated representative present (with prior notice) during all measurement, harvest and weighing processes.
 - Entry forms must be postmarked by August 1, 2022. Incomplete entry or harvest report forms will be returned.
 - Contestants are officially entered only after their entry form has been received and processed by the ARSA and notified in writing as officially entered in the 2022 Grow for the Green Soybean Yield Challenge.
 - The field location must be submitted to ACO and AR Soybean Assn. at least 7 days prior to harvest. GPS coordinates for all four corners on the contest field must be submitted.**
 - Contestant must contact primary ACO at least forty-eight (48) hours prior to harvest. Primary ACO will arrange for 1 additional ACO to be present during harvest. It is recommended that the primary ACO be a member of the UADA Extension Service. If primary ACO is not a UADA employee, the second one must be.
 - ACO and verification team will be available for the harvest of 1 plot in 1 field only.**
 - All two (2) ACO and the contestant will sign the Harvest Report and attest and certify the following: harvested area, percent moisture to nearest tenth percent (00.0%), total foreign material, yield in pounds and final yield (adjusted to 13% moisture on a per acre basis). One ACO will accompany the harvest to the elevator for weigh in. Report must be postmarked by December 1, 2022 and mailed to ARSA. For the purpose of this contest a 100 Bu/A yield shall constitute 6,000 pounds per acre after adjustments are made for moisture and total foreign material.
 - No yield information is to be released to the media unless it has been verified by the UADA.
Primary ACO will acquire a one pound sample and mail/ship sample to office (1501 N Pierce, Suite 100, Little Rock AR 72207)
 - All contestants are reminded to read and follow ALL directions on crop protections products. Number of applications and rates must be within the label.
 - Variety: No experimental line(s) allowed. Variety selected must be available, in the marketplace and listed in the company sales brochure for Arkansas.
 - Contest officials may require proof of previous planted crops (FSA, Crop insurance records etc) from entered producers.

CHECKOFF FUNDS ARE USED IN THIS CONTEST.

Questions? Please contact the Arkansas Soybean Association at 501-666-1418 or swsoy@aristotle.net.